

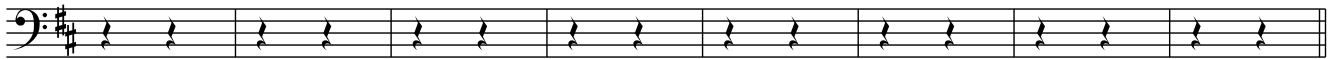
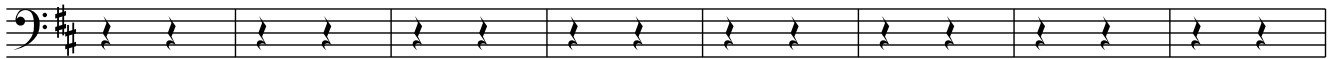
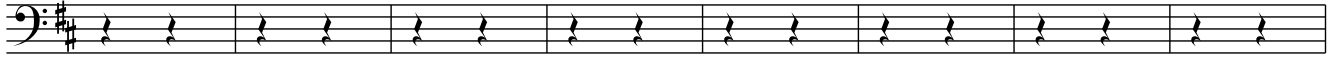
Down by the Sally Gardens (BASSE)

IABCDEF

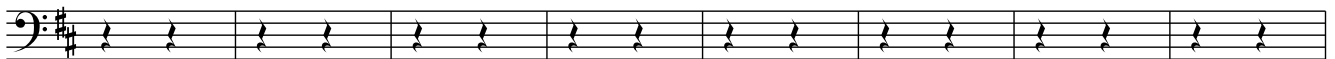
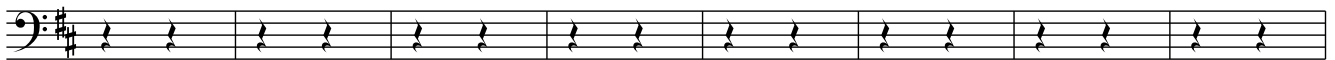
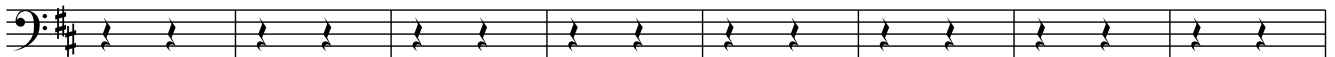
 $\text{♩} = 44$

I A

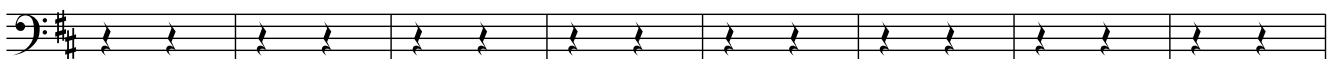
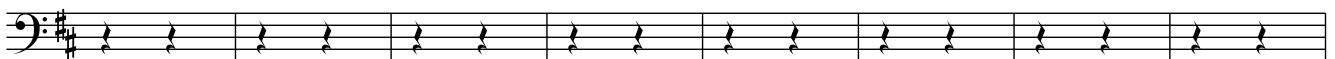
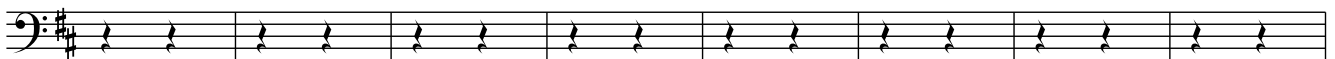
Basse



B



C



D

The D section consists of four staves of music. The first two staves are identical and feature a rhythmic pattern of eighth notes: D4, E4, F#4, G4, A4, B4, A4, G4, F#4, E4, D4. The third staff contains a sequence of chords: D4, E4, F#4, G4, A4, B4, A4, G4, F#4, E4, D4. The fourth staff is identical to the first two staves.

E

The E section consists of four staves of music. The first three staves are identical to the D section. The fourth staff features a rhythmic pattern of eighth notes: E4, F#4, G4, A4, B4, C#4, B4, A4, G4, F#4, E4, ending with a half-note chord of E4 and B3.